

Integrating Healthcare for Substance Use Disorder

MAHP Summer Conference

Bob Mirel
Senior Advisor
Altarum Institute

A Tale of NO Integration

▲ Julia's Story

Today's Themes

- ▲ Holistic/Integrated Approach = Recovery
- ▲ Individual Choice
- ▲ Care Coordination

What's Been Happening?

- ▲ **When they seek it, they often don't follow through.**
 - 50% to 70% of those who call for an assessment fail to show up for their intake appointment.
 - Less than half of those admitted to publicly funded addiction treatment successfully complete treatment.
- ▲ **Many people have experienced trauma and are at risk of being re-traumatized in treatment settings.**
 - Two-thirds of men and women in substance use treatment report childhood abuse or neglect.
 - Female survivors of childhood abuse did not improve in treatment as much as their non-abused peers in psychological functioning, substance use, or continuing trauma exposure.

What's Been Happening? (cont.)

- ▲ **Even if people complete treatment, they need social support to sustain their recovery.**
 - More than 50% of individuals discharged from addiction treatment resume alcohol and/or other drug use within the following 12 months (Wilbourne & Miller, 2003), most within 30 to 90 days of discharge (Hubbard, Flynn, Craddock, & Fletcher, 2001).
 - The transition from recovery initiation to lifelong recovery maintenance is mediated by processes of social support (Jason, Davis, Ferrari, & Bishop, 2001).

Access to Recovery (ATR)

▲ Altarum Institute

- Has provided technical assistance to SAMHSA's ATR initiative since 2007.
 - A systems change initiative—person-driven services
 - 40 States and 6 Native American communities
 - 800,000 individuals with a total of \$1.1 billion (\$1,375 average/person)

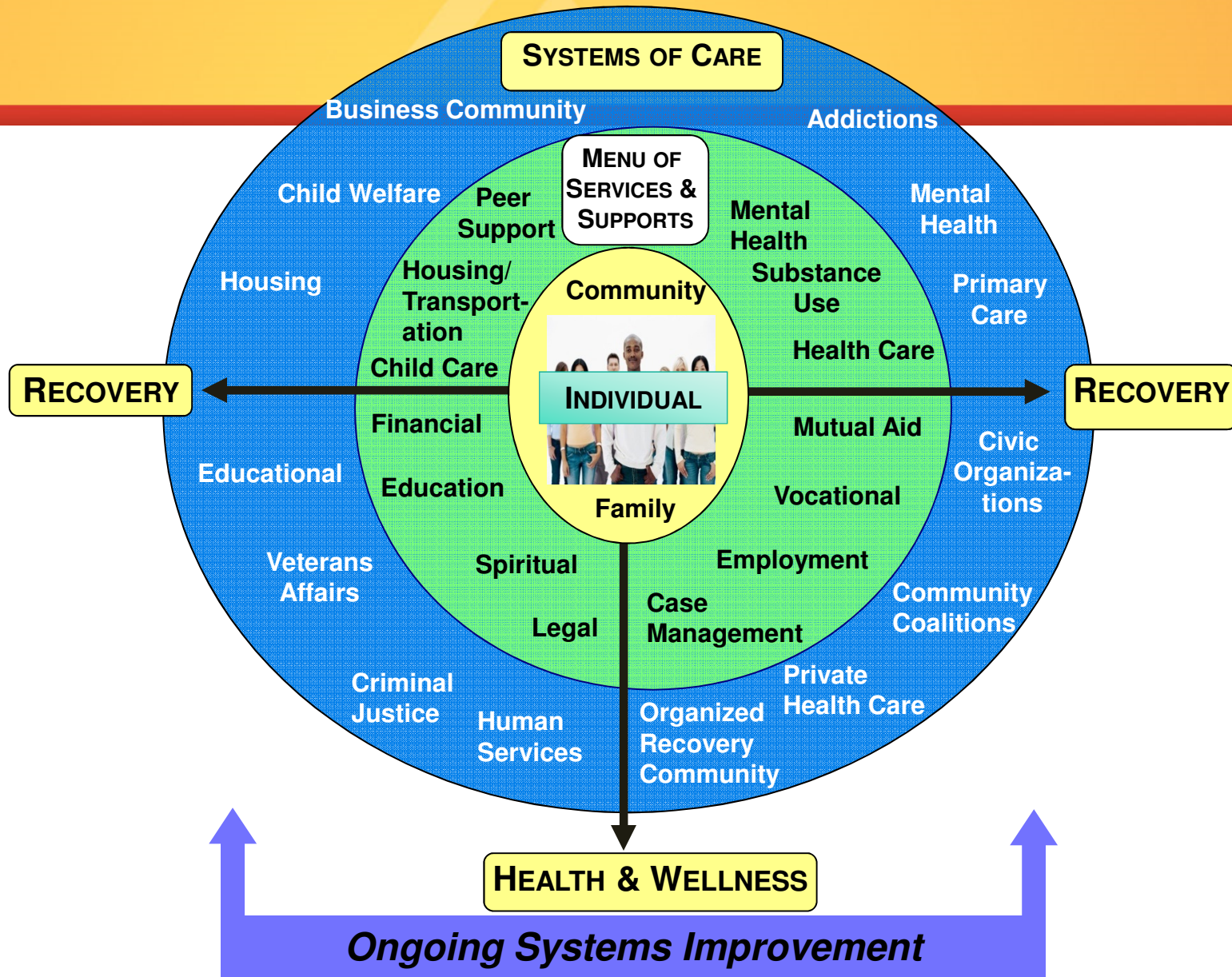
ATR (cont.)

▲ Altarum Institute

- Program designed to support individual choice!
 - Care coordination requirement
 - No provider contracts
 - Voucher-funded services
 - Required pre- and post-data collection
- Services and providers (new and nontraditional)
 - Recovery support services (e.g., housing, employment assistance, social networking development, parenting, financial management)
 - Peer coaching (Medicaid reimbursable in Iowa)
 - Grassroots, community, and faith-based organizations

The Role of Care Coordination

- ▲ **Build engagement and trusting relationships.**
 - Use techniques, such as motivational interviewing and active listening.
- ▲ **Assist individuals in the development of their recovery plans.**
 - Include life goals.
 - List steps to achieve them.
 - Determine the services and support needed.



Goal: Long-Term Recovery

- ▲ **To live a successful life in the community**
 - A safe and affordable place to live
 - Meaningful daily activity (e.g., employment)
 - A strong social network that hopefully includes family
 - Ability to address health care issues

ATR 2 GPRA Data (7,072 Individuals) and ATR 3 GPRA Data (1,645 Individuals) for Follow-Ups Completed Between January 1, 2008, and April 30, 2012

GPRA Item - increase % of individuals receiving services who report (in past 30 days):	ATR 2 Intake	ATR 3 Intake	ATR 2 Follow-Up	ATR 3 Follow-Up	ATR 2 Rate of Change	ATR 3 Rate of Change
C1 - Housed in Own Home/Apartment	35.92%	44.33%	42.43%	52.40%	18.15%	18.19%
D1 - School/Training – Enrolled Full- or Part-Time	9.11%	14.19%	13.25%	18.50%	45.50%	30.34%
D3 - Employment – Full- or Part-Time	24.34%	32.75%	40.58%	50.88%	66.76%	55.37%
G1 - Participation in Voluntary Self-Help Groups	39.38%	54.64%	44.23%	64.28%	12.32%	17.65%
G2 - Participation in Religious/Faith-Affiliated Groups	19.88%	21.29%	16.73%	24.74%	-15.86%	16.24%
G3 - Participation in Other Groups	16.18%	24.01%	17.18%	29.29%	6.21%	21.97%
B1a - Alcohol Use	37.95%	23.71%	15.77%	11.76%	-58.46%	-50.38%
B1c - Illegal Drug Use	37.60%	26.26%	10.73%	8.49%	-71.46%	-67.67%
B3 - Injection Drug Use	4.93%	4.18%	1.27%	1.15%	-74.21%	-72.46%
C6b - Have Child under Child Protection	8.77%	8.73%	6.63%	5.70%	-24.35%	-34.72%
E1 – Arrested	12.27%	8.00%	4.07%	4.24%	-66.82%	-46.97%
E4 - Committed Crimes	41.09%	28.81%	12.34%	9.95%	-69.96%	-65.47%
F3b - Unprotected Sexual Contact	36.58%	35.78%	31.53%	29.41%	-13.80%	-17.80%
F5a - Experienced Serious Depression	45.48%	41.96%	28.41%	33.29%	-37.53%	-20.66%
F5b - Experienced Anxiety or Tension	52.28%	53.97%	34.39%	41.60%	-34.22%	-22.92%
F5d - Trouble with Comprehension/Memory	30.59%	31.53%	17.94%	20.92%	-41.33%	-33.65%
F5e - Trouble Controlling Violent Behavior	9.12%	8.25%	5.10%	4.85%	-44.03%	-41.18%

Effects of an Integrated Approach

- ▲ **Reduced recidivism**
 - Involvement in the criminal justice system
 - Non-recurrence of inpatient care for substance use challenges
- ▲ **Reduced drug use**
- ▲ **Reduced incidence of emergent and inpatient care needs**
 - Lower health care and costs
- ▲ **Access to primary care**
- ▲ **New partnerships**
 - Co-location of substance use professionals and primary care
 - Federally Qualified Health Centers (e.g., Iowa)
 - Emergency rooms
 - Behavioral health clinics